



## Texsa Asia Projects



**Marina Bay Sands IR**

**Texself PE 3 mm  
100,00m<sup>2</sup>**

**Tecsound 100  
20,000m<sup>2</sup>**

**CLEAR  
POINT**





# Texsa Asia Projects



## Marina Bay Sands IR

**Texself PE 3 mm & Tecsound 100**  
**100,00m<sup>2</sup> & 20,000m<sup>2</sup>**









## Reflections @ Keppel Bay

Texself M - 25,000m<sup>2</sup>

Owner: Keppel Land Ltd





## Texsa Asia Projects



**25,000m2 of Texself M was installed on all the Beach Villas and the Equarius Hotel**







# Texsa Asia Projects



**CLEAR  
POINT**

**25,000m<sup>2</sup> of Texself M was installed on all the Beach Villas and the Equarius Hotel**





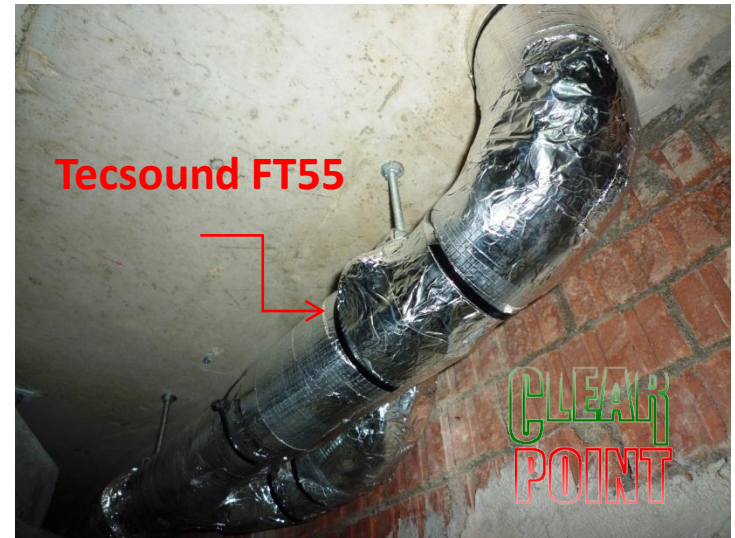
## The Interlace







## The Interlace







# Texsa Asia Projects



## Framas Factory Project In HCM, Vietnam Year 2012

Vinitex MP 1.5 - 20,000m<sup>2</sup>





**Singapore Sport Hub - Vinitex MAT 1.5 , 10,000m<sup>2</sup>**

